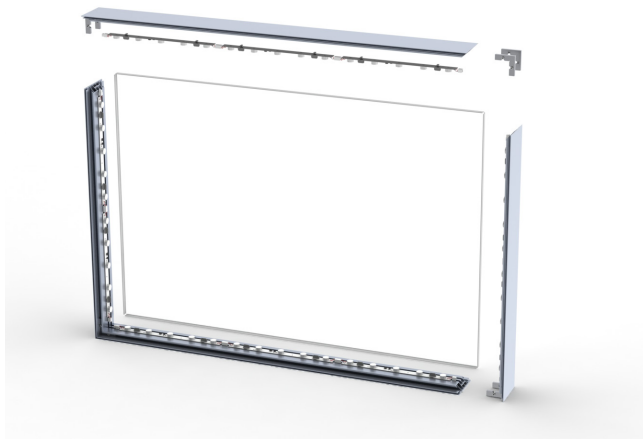




PROFILE 120TX FABRIC

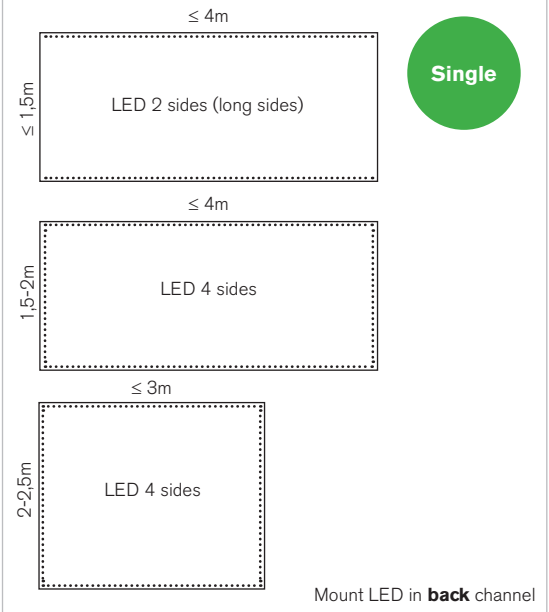
– for double sided or single sided Light boxes



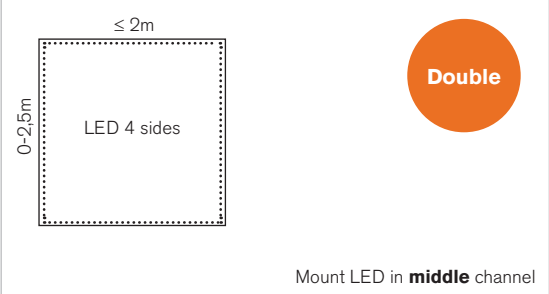
Profile 120TX has been designed to provide a solution for slim double sided LED light boxes, it can also be used for single sided light boxes where the 120mm depth is preferred. Profile 120TX can be used free-standing (with additional base plates), wall mounted, or incorporated into displays for exhibition and retail solutions.

Using our modular LED lighting solution, light boxes of any size can be quickly and easily assembled on site, helping reduce transportation costs. This is achieved using 360mm rigid LED strips which plug and play together around the perimeter of the frame. The assembly takes minutes and offers a tool-less, hassle-free solution which can be dismantled and re-used for future projects. This keeps the solution modular and reusable – just like our profiles.

SIZE RECOMMENDATION 120TX Single sided (maximum):

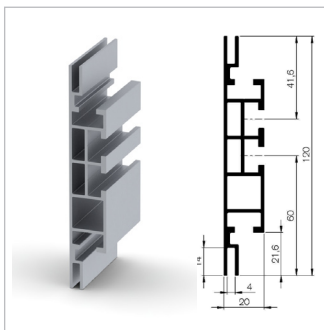


SIZE RECOMMENDATION 120TX Double sided (maximum):



FACTS

Natural anodised aluminium profile 120TX is supplied in 6m stock lengths or can be cut to custom sizes.
Recommended media: Stretch fabric for light box, for One sided Light box Block out fabric is needed in back.



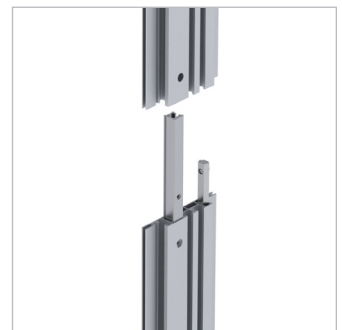
Profile 120TX



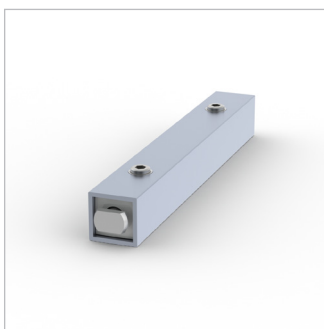
Cost and energy-effective solution with LED. 67150.



120TX with coupling 613 (2pcs/ corner)



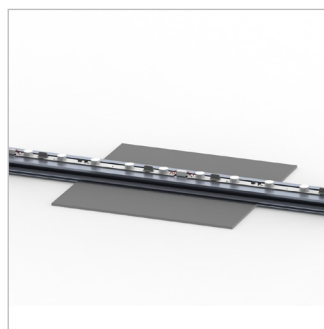
Extension connectors - 1pc coupling 604 + 1pc coupling 609



Beam. Profile 90 with coupling 615A/615 B. Mount in same channel as LED.



Wall bracket for 150TX & 120TX



Base plate for free-standing solution.



TV-bracket